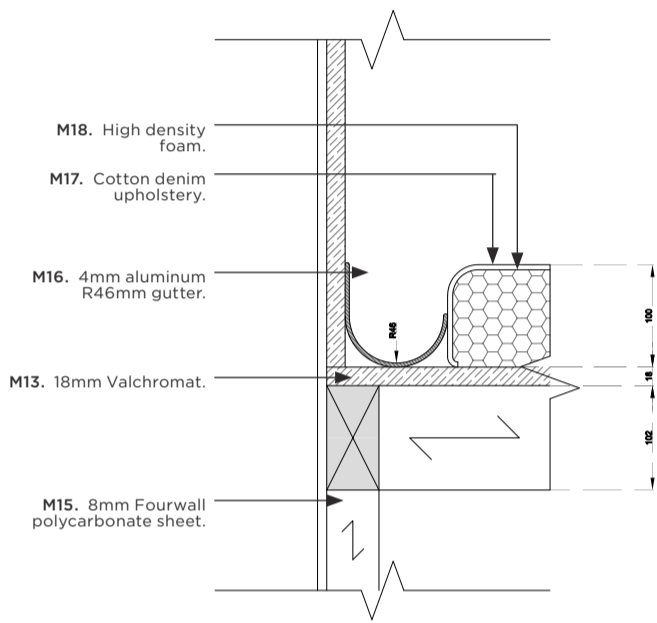
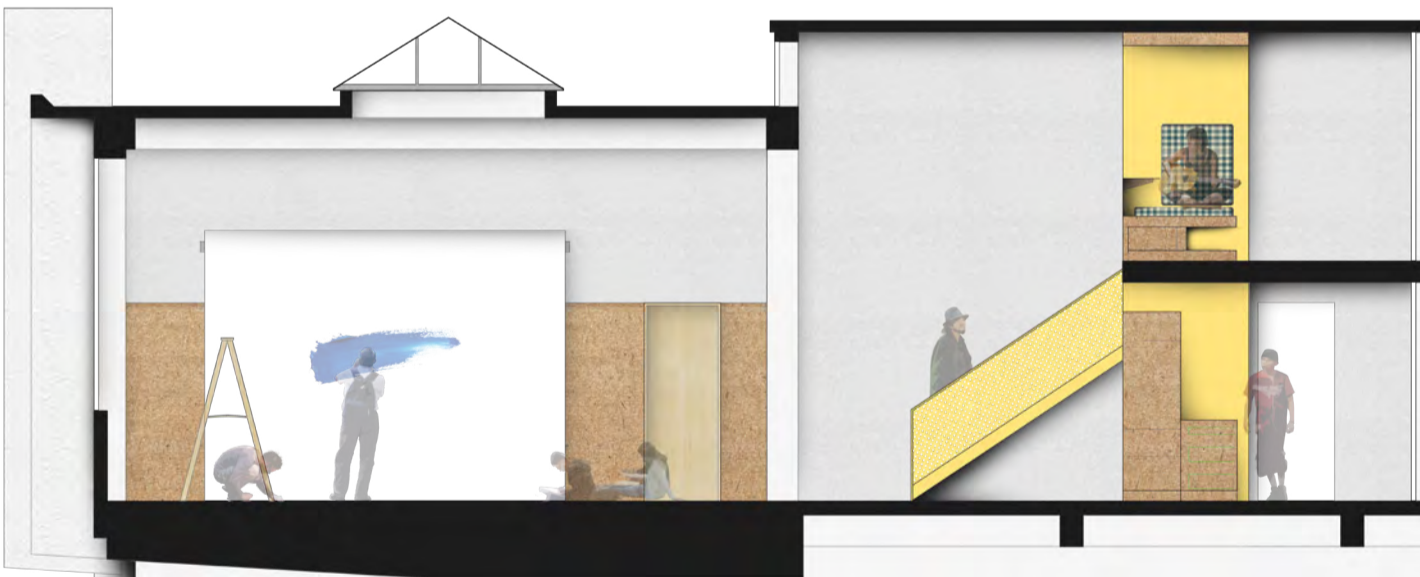


3 DRAWING IN SHELTER

Drawing in Shelter has a self-generated project brief: to design an art studio for people facing homelessness, where users can discover new hobbies, learn practical skills, and find community and connection. Based on interviews with professionals within the charity industry and secondary research, the design responds to traumatic experiences of homelessness by evoking a sense of belonging, ownership, trust, safety and choice for users.



The project's distinct design identity is created by the Key Threshold, which is a 'hub' of various activities and cohesively connects activities, users and staff throughout the building to maintain a sense of shared space and community. The Key Threshold plays an important role in regulating users' emotional responses to an unfamiliar and potentially daunting place: it signals an area of transition between floors and activities, therefore managing expectations, as well as providing users with views into other areas, meaning they can observe activities before deciding to participate.

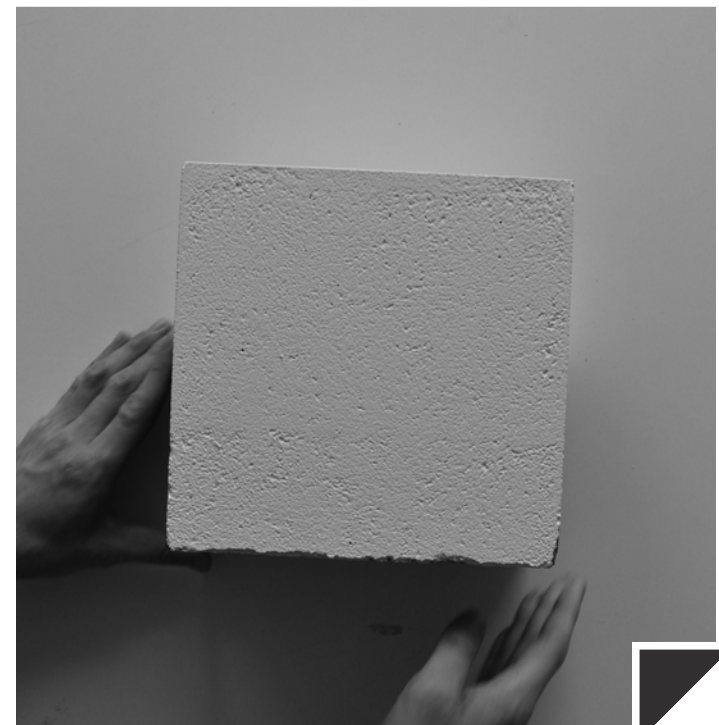


Most significantly, the Key Threshold acts as a crucial meeting point for users, in particular for those who may choose to approach the building through different entrances (private vs. public) on the ground floor.

TOM NARAI COWLES

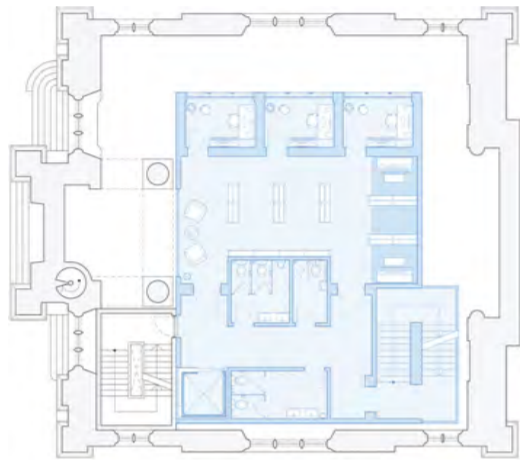
INTERIOR DESIGN MINI-PORTFOLIO

UNDERGRADUATE PROJECTS

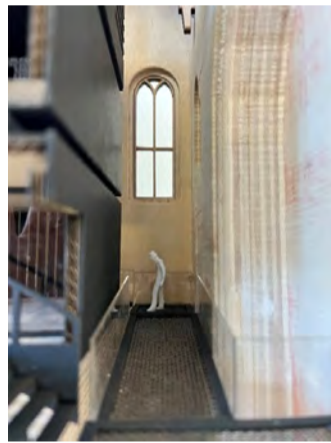


1 TRON SOUND LIBRARY

The Tron Kirk Sound Library responds to the historic character of the Tron building, situated on the medieval Royal Mile in the city centre of Edinburgh. Alongside the project brief - to create a sound library - preserving the original Category A listed building and wynd underneath was the driving force behind this project. The design concept was a building within the Kirk, which framed the building's interior and wynd, as well as provided sufficient sound insulation from the busy city outside.



Second Floor Plan



The project was communicated through a 1:50 section model. The model's shell was constructed using layers of laser cut and CNC'd plywood to communicate the thickness of the Kirk's exterior walls. This was then clad in black card to retain attention on the interior concepts. This project was shortlisted for the Interior Educators 2024 Craft and Making award.

2 SELECTED DRAWINGS

A second-year project, designing a bar themed around a certain drink. In response, the design concept was a moonshine bar and hostel, highlighting the history of moonshine production, with a secret speakeasy-style bar in the basement, which is communicated in the hand-rendered elevation using coloured pens below.



A first-year elevation of the Edinburgh College of Art Sculpture Court, exploring different drawing types. Drawn using a biro pen.